

Drill Solutions

For mine sites



DrillGrade

For all makes & models of drill rig

Accurate Drilling = Better Blasting

Better Blasting = Better Fragmentation

Better Fragmentation = Lower Downstream Costs

Carlson's DrillGrade platform guides the operator and enables parallel hole drilling, to the correct depth, in a safe and efficient way.



Overview:

- Get correct angle and depth of all holes
- Enable correct hole and row distance at bottom of the blast
- Significantly reduce the need to mark collar points and depth

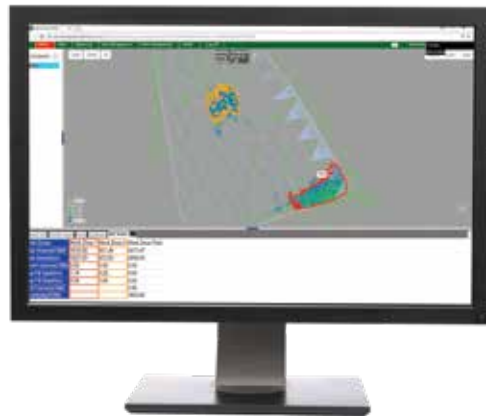
Benefits

- Reduces blasting costs
- Lowers survey costs
- Integration option for fitting FlexiROCK™ with HEC3 system and SmartROCK™ with RSP system
- Enables all-weather operation, day or night
- Retrofit to almost any drill rig
- Provides real-time information for operators and office personnel
- Keeps operator in the cab & out of harm's way, thanks to stakeless drill pattern layout
- Has both audio and visual alarms, set up for avoidance zones, to keep machines in safe working boundaries
- Prevents encroachment of individual machines with proximity warnings. Operators know each machine's location and alarms can be triggered if a proximity zone is breached
- Fleet efficiency enhanced with as-built data recorded locally and shared between multiple rigs working the same pattern - marrying machines. (Requires wireless network and Carlson Command)



Carlson Command

Optimise workflow and reporting



Carlson Command is a software platform designed to give managers and engineers everything they need to make informed decisions in drilling applications. With the ability to see what's happening in the field in real time, users can analyse productivity through accurate reporting and ensure machines are following the drill pattern.

2-way communication between machines and the office allows for design files to be sent to multiple machines and supervisor vehicles simultaneously, whilst also collating data into a single drill report. With flexible file import and export options, Carlson Command works with your existing technology and systems to optimise your workflow.

- Productivity analysis
- Data management of single or multiple sites
- Direct machine-to-machine communication and data sharing with live and historical 3D machine playback
- In-cab monitoring and training from the office
- Full drill pattern design mapping with real-time depth and location updates
- Create and customise tasks, delays and down codes



Our Services

The Position Partners difference

Systems and data management consulting

Prior to, and during, major projects our advice has contributed to successful project quality and delivery. Technology solutions can provide high productivity gains, but the choice is broad and expert advice is paramount to successful deployment.

On-site service

At Position Partners, we understand that even the most robust equipment needs maintenance every now and then. When it does, trained field service engineers are on-hand to provide corrective action and advice for minimum downtime.

With offices in every state and territory and more than 80 technicians throughout Australia, New Zealand and South East Asia, Position Partners is on hand to help. Regional support hubs at remote locations in Queensland and Western Australia have been established in response to specific projects.

All field service engineers are trained by product manufacturers to give unrivalled technical expertise. We provide flexible Support Level Agreements (SLAs) that cover on-site installation and support, calibration, network interfacing, maintenance and repairs, plus remote diagnostic capabilities with Tokara Link.



Workshop Services

Comprehensive product service, maintenance, repairs and advice are provided via our local service centres. We guarantee all our work and can supply calibration certificates to meet QA requirements.



Training

Initial "getting started" training is provided on all systems. Subsequently, a comprehensive range of Campus courses are tailored for beginners to advanced users, either at our offices or on site



Hire or lease options

The full range of systems, from pipe and grade lasers, to world leading Topcon surveying and 3D machine control systems can be hired or leased to suit any application and provide financial flexibility.



Get in touch today:

1300 867 266

info@positionpartners.com.au

www.positionpartners.com.au

Australia • New Zealand • SE Asia

Position
Partners

Shaping New Dimensions