

Mining Solutions
& tailored support



Company Overview

Position Partners is Australia's premier provider of positioning and intelligent machine systems for surveying, mining, civil works and building. At Position Partners, we are committed to increasing productivity for our customers and building lasting business relationships around high calibre positioning activities.

A full range of leading instruments and systems is backed by a complementary range of services and application expertise to provide customers the support and advice they need for any project.

Position Partners was formed in 2008 from a merger of five state-based companies to create a national, cohesive business.

With more than 200 people throughout Australia, New Zealand and South East Asia, Position Partners is the largest Australian-owned company that focusses entirely on the implementation and support of geospatial and machine solutions.

Acting local keeps us focussed on individual customer requirements and providing customised solutions.

Thinking regional creates wider initiatives, wiser investment and drives innovation. As an example, we developed a custom-built solution to track construction machinery using satellite communications in remote areas of Western Australia and this is now being deployed regionally.

Our customers choose Position Partners because our professional teams have the specialist service expertise to ensure quick project start and maximum uptime. Every challenge is an opportunity to work together to deliver systems that exceed expectations.



Our Services

The Position Partners difference

Systems and data management consulting

Prior to, and during, major projects our advice has contributed to successful project quality and delivery. Technology solutions can provide high productivity gains, but the choice is broad and expert advice is paramount to successful deployment.

On-site service

At Position Partners, we understand that even the most robust equipment needs maintenance every now and then. When it does, trained field service engineers are on-hand to provide corrective action and advice for minimum downtime.

With offices in every state and territory and more than 80 technicians throughout Australia, New Zealand and South East Asia, Position Partners is on hand to help. Regional support hubs at remote locations in Queensland and Western Australia have been established in response to specific projects.

All field service engineers are trained by product manufacturers to give unrivalled technical expertise. We provide flexible Support Level Agreements (SLAs) that cover on-site installation and support, calibration, network interfacing, maintenance and repairs, plus remote diagnostic capabilities with Tokara Link.



Workshop Services

Comprehensive product service, maintenance, repairs and advice are provided via our local service centres. We guarantee all our work and can supply calibration certificates to meet QA requirements.



Training

Initial “getting started” training is provided on all systems. Subsequently, a comprehensive range of Campus courses are tailored for beginners to advanced users, either at our offices or on site



Hire or lease options

The full range of systems, from pipe and grade lasers, to world leading Topcon surveying and 3D machine control systems can be hired or leased to suit any application and provide financial flexibility.



Intelligent Machine Guidance

Manage the efficiency and productivity of your machines with Carlson machine guidance. Designed specifically for mine site operation, Carlson technology is versatile and can be used across multiple machine types. Reduce your survey costs, save time and drastically reduce the costs associated with rehandling.



Benefits of machine guidance:

- Eliminate delays waiting for in-field surveys or for supervisors to check status
- Give your operators the power to mine to the latest design
- Dramatically reduce rehandling by ensuring operators get it right the first time
- Rapid response to design changes by uploading the latest file to all machines, simultaneously
- Easy to see interface to operate accurately in all light and weather conditions
- One user friendly control box for operators to use





Dozer machine guidance

Give your operators the power to mine to the design and reduce downtime with Carlson Grade for dozers. With a simple, user friendly interface that can be used across a wide range of machine types, MineGrade will increase machine productivity and profitability.

- Correct floor elevation
- Increase productivity through accurate push strategies
- Reduce idle time
- Easily mine to the design
- Reduce survey cost
- Keep personnel out of harm's way
- Get 24/7 survey assistance
- Increase safety with watch and warning zones
- Track materials
- Determine accurate overhaul costs
- Finish reclamation areas



Supervisor kit

Ensure machines are working accurately to design with Carlson Grade Supervisor. This easy to use and versatile solution enables supervisors to quickly move from a light vehicle to a survey rover in order to check RLs, slopes and more.

With the ability to work with most GNSS receivers and import/export a wide range of file formats, Grade Supervisor is a dynamic option that will fit in with your existing workflow and hardware.

- Get real time cut/fill and grade levels across entire site
- Collect, stakeout and check as-built points
- Import and export to most file formats for compatibility with other software platforms
- Handle large surface files
- Manage drawing layers

Excavator Machine Guidance

Using the same interface as other Carlson machine guidance solutions, Carlson Grade for excavators gives operators greater situational awareness through proximity warnings between machines and fixed assets. It also increases safety for surveyors and engineers by reducing survey time in the field.

- Build to design for better highwall and proper bench elevation
- Dig to design utilising surfaces or block models
- Reduce survey costs
- Real-time cut/fill/on-grade to multiple design surfaces
- Build simple or complex pads and slopes in the field. flat/ single/dual/multi
- Accurately build to elevation offsets
- Update surfaces and cut/fill colour map real time across the entire project
- Track single or multiple points
- Able to work with bucket and clam shovel configurations



DrillGrade

For all makes & models of drill rig



Accurate Drilling = Better Blasting
Better Blasting = Better Fragmentation
Better Fragmentation = Lower Downstream Costs

Carlson's DrillGrade platform guides the operator and enables parallel hole drilling, to the correct depth, in a safe and efficient way.



Overview:

- Get correct angle and depth of all holes
- Enable correct hole and row distance at bottom of the blast
- Significantly reduce the need to mark collar points and depth

Benefits

- Reduces blasting costs
- Lowers survey costs
- Integration option for fitting FlexiROCK™ with HEC3 system and SmartROCK™ with RSP system
- Enables all-weather operation, day or night
- Retrofit to almost any drill rig
- Provides real-time information for operators and office personnel
- Keeps operator in the cab & out of harm's way, thanks to stakeless drill pattern layout
- Has both audio and visual alarms, set up for avoidance zones, to keep machines in safe working boundaries
- Prevents encroachment of individual machines with proximity warnings. Operators know each machine's location and alarms can be triggered if a proximity zone is breached
- Fleet efficiency enhanced with as-built data recorded locally and shared between multiple rigs working the same pattern - marrying machines. (Requires wireless network and Carlson Command)

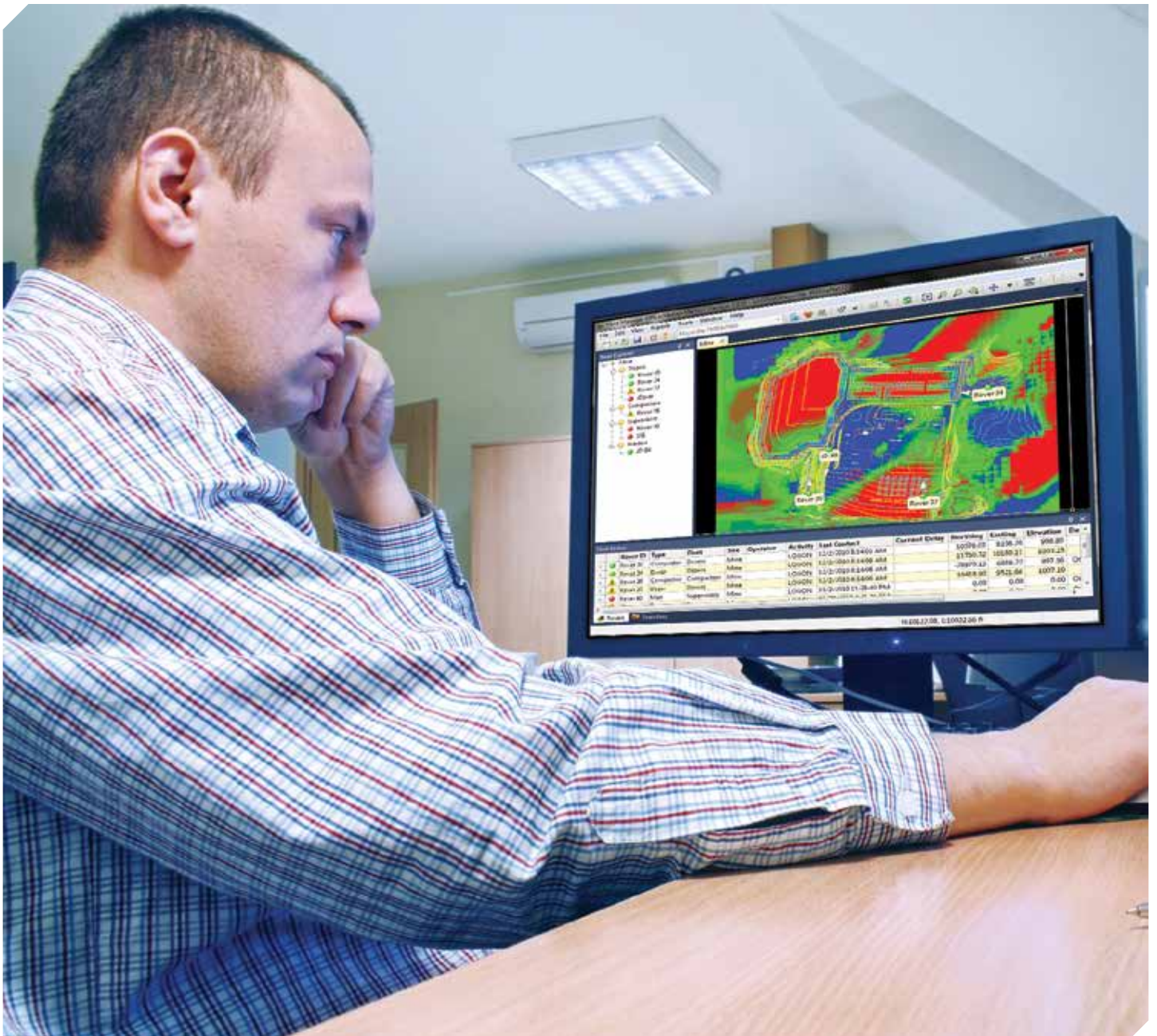


Carlson Command

Command and Control from Anywhere

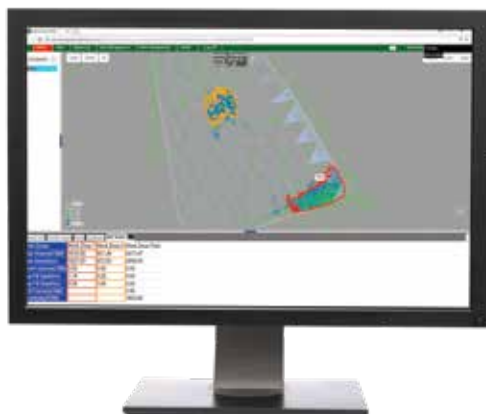
Carlson Command is an office software platform designed for data collection, analysis and reporting. Accessible from anywhere that has an internet connection, Carlson Command is a monitoring and data management software solution that transmits data from machines to the office and from the office to machines.

- Productivity analysis
- Data management of single or multiple sites
- Direct machine-to-machine communication and data sharing with live and historical 3D machine playback
- In-cab monitoring and training from the office
- Full design mapping with real-time cut, fill and elevation information
- Create and customise tasks, delays and down codes



Carlson Command

Optimise workflow and reporting



Top New Features

- Stream Server and Carlson Command Web uses modern, powerful protocols for machine connection and data transfer and enables light weight user install
- Send projects, installs, files and configurations to a single machine or your whole fleet with confidence
- Improved data input and real-time transfer means knowing the data is up-to-date and accurate
- New required task feature ensures operators are logging their time accurately
- New ability to manage, view, and create custom reports of multiple As-Built surfaces within the site linework

User-Friendly Web Interface

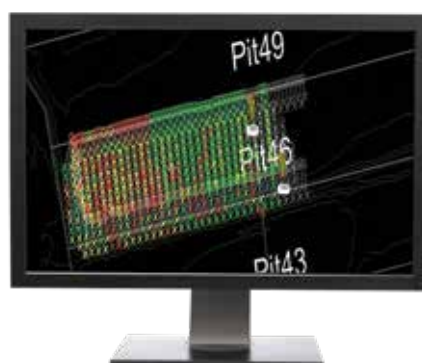
- Quick, Easy Report Customization
- Cloud Data Management
- Management of Multiple Sites
- Scheduled Reporting with Automatic Emails
- Comfortable, Clear Interface

Powerful Management & Reporting

- Individual Machine Volume Metrics
- Dozer Push Metrics
- Time Reporting
- Drill Reporting
- Productivity Analysis
- Surface Colour Mapping
- Cut/Fill Colour Mapping
- Rover Position Trace
- Historical Replay

Dynamic Productivity Tools

- On-the-move data exchange (machine to machine)
- Surface updating
- In-cab monitoring
- Tasks & delays/down-codes
- On-site proximity warnings
- Avoidance zones, and more



Survey & Geospatial

Having pioneered the introduction of many technology releases in Australia, Remotely Piloted Aircraft Systems (RPAS) for high resolution imagery and mapping are the most recent. Position Partners continues to search for and monitor the latest developments from around the world to further enhance safety and productivity for the industry.



Remotely Piloted Aircraft Systems (RPAS)

RPAS technology facilitates fast, efficient and safe aerial surveys for a wide range of applications including stockpile volumes, road and pipeline corridor mapping, site progress reporting and environmental monitoring.



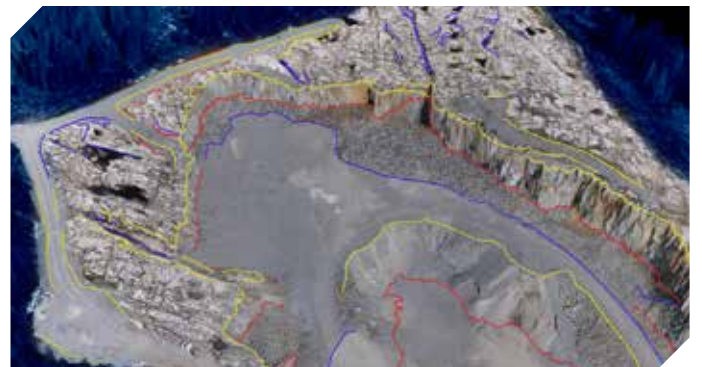
3D Laser Scanning & Mobile Mapping

High resolution 3D modelling enables users to capture reality in minutes. A range of handheld, static or vehicle-mounted scanning solutions is available to scan every asset from small objects and complex structures through to whole of site.



Robotic Total Stations and GNSS

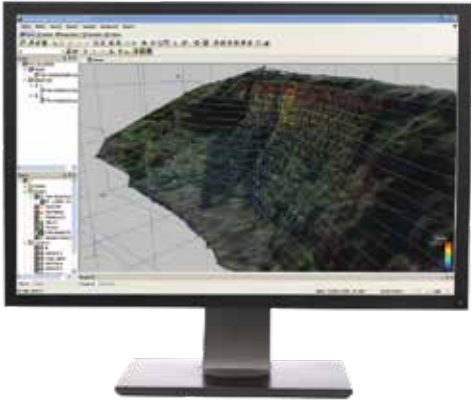
Topcon's leading range of GNSS and total station solutions gives you unparalleled accuracy and reliability to increase your productivity in the field. Compact and durable, these tools are designed to go the distance even on the toughest of jobs.



Data processing, visualisation & analysis

From easy to use software on your survey tablet through to state-of-the-art post processing and modelling solutions, we offer a comprehensive range of services to enable you to analyse, visualise and manage your mine site data.

Monitoring solutions



Manage risk with accurate deformation monitoring solutions that incorporate industry leading features and ultimate reliability. Position Partners offers comprehensive solutions including hardware and software to ensure fast deployment and maximum productivity improvements.

Deformation Monitoring

Position Partners offers a combination of hardware and software components designed specifically for deformation monitoring in mining and major infrastructure applications.

Using the advanced Topcon MS AX II series monitoring robotic total station, along with GNSS technology and sensors, the Topcon Delta solution also features easy-to-use software for data analysis, reporting and alarm management.

If critical changes occur, automatic warning and alarm messages are sent via email or SMS to enable immediate action.

Senceive World-First FlatMesh technology

FlatMesh technology represents a step change in wireless condition monitoring solutions, with devices that work cooperatively and intelligently across the site.

- Very high precision and stability
- Unique ability to provide automatic triggering of increased reporting rates down to 15 secs.
- Data is available to display or download on easy to use web based remote visualisation.
- Better trend analysis
- Multi-level text and email alerts.
- Fast and easy to deploy
- 10 year sensor battery life
- No mains power requirement



Making Safety No.1

Position Partners is committed to achieving minimum Lost Time Injuries and zero damage to the environment at all sites. In addition, we aim to provide a quality service to our customers.

Position Partners uses a risk management methodology in relation to our quality, safety and environment management plan. This involves assessment of the risks and implementing mitigation activities. Hazards and safety risks are controlled by a 'Safe Work Method' statement, where field service engineers and other stakeholders are consulted.

Management is accountable for ensuring that only qualified electrical persons perform work on electrical equipment, and for ensuring that qualified electrical persons have the required training and approved equipment and PPE. Similarly, Material Safety Data Sheets (MSDS) may be obtained for all chemical substances prior to use in the workplace.

Our People

Position Partners has formed a unique blend of IT, surveying, engineering, electronic, mechanical and construction machinery expertise. From the Board to executive management and operations, the combination of these skills permeates all aspects of the company's activities. Position Partners' sense of purpose is to earn the respect of customers so a professional approach with high service standards guides our day-to-day actions. On-going investment in our people's training and development sustains this unique capability.

All personnel, including subcontractors working for Position Partners, are trained in our systems and products to ensure the highest professional capability. A training analysis is conducted for employees on an annual basis to ensure on-going training and development in line with evolving technology and changing customer requirements.



Get in touch today:

1300 867 266

info@positionpartners.com.au

www.positionpartners.com.au

Australia • New Zealand • SE Asia

Position
Partners

Shaping New Dimensions