



# — SENSOR SLEW —

## SLEW LIMITING SYSTEM



The SensorSlew motion control system is a simple, cost effective slew limiting solution designed to guarantee safety and prevent machine damage when operating in confined spaces.

### How SensorSlew Works

Position Partners has integrated the SensorSlew system with Topcon 3D machine control. SensorSlew allows the machine operator to quickly and easily set left and right slew limits from the operator station, and then restricts the machine to working within the permitted slew sector.

Topcon 3D machine control calculates the angular limits from the bucket to a selected line and sends these angles to SensorSlew. This provides a continuously updated set of limits to allow the excavator to work in the designated working area and not enter an exclusion zone.

### SensorSlew Application with Topcon 3D-MC

Using a CAN connection, Topcon 3D-MC can be used in conjunction with GKD SensorSlew technology to enable the operator to select linework on the Topcon GX-55 control box for slew avoidance/lock out. The systems seamlessly work together to enable the limiting of excavator slew for safety purposes, relative to the design linework displayed on the control box.

## SensorSlew Application

The SensorSlew system is intended for use on excavators and cranes in the construction and utility maintenance industries where machines are restricted to working in confined spaces and there is a requirement to limit the slew movement of the machine.

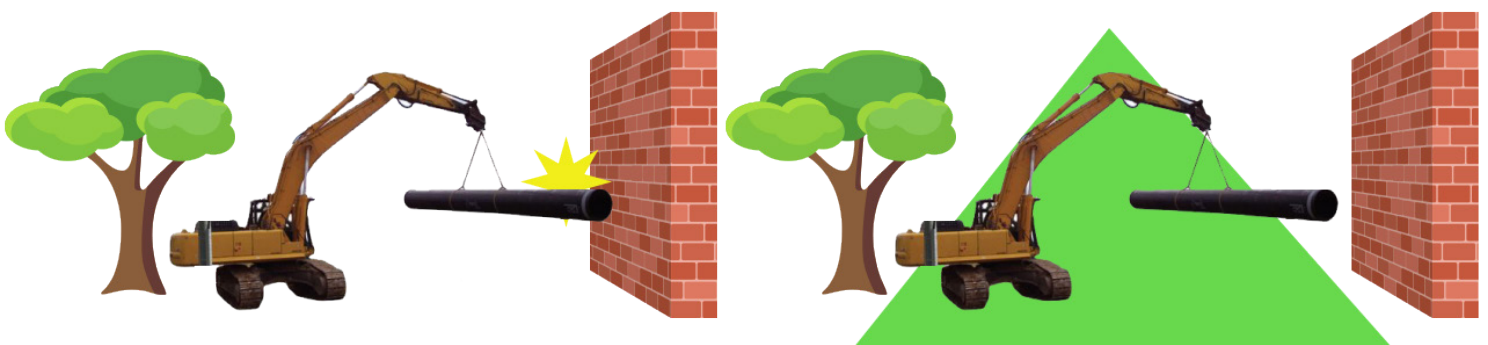
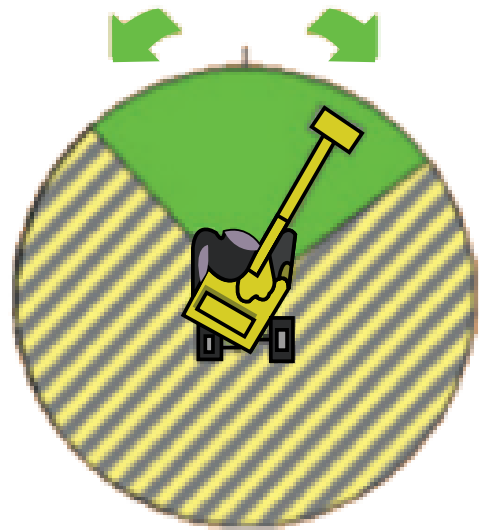
## SensorSlew Specification

As the left or right slew limit is reached a hydraulic solenoid valve is released to cut off the relevant slew hydraulic service, and therefore prevent the machine from entering the exclusion zone. Slew operation in the opposite direction, back into the 'safe' zone, is still permitted.

The system can be installed by any competent engineer and requires a simple rotational calibration to learn the number of teeth on the machine.

## The SlewSolution system at work

The SlewSolution system allows the machine operator to set a 'safe zone' within which the machine will operate. If the machine operator directs the machine to move outside the 'safe zone' the hydraulic solenoid valve is released to cut off the relevant slew hydraulic service, preventing the machine from moving outside the 'safe zone'.



Get in touch today:

**1300 867 266**

[info@positionpartners.com.au](mailto:info@positionpartners.com.au)

[www.positionpartners.com.au](http://www.positionpartners.com.au)

Australia • New Zealand • SE Asia

**Position**  
Partners

Shaping New Dimensions