

Position
Partners

Shaping New Dimensions

Survey Solutions

SALES | HIRE | SERVICE | TRAINING



GNSS and Total Stations

Topcon's leading range of GNSS and total station solutions gives you unparalleled accuracy and reliability to increase your productivity in the field. Compact and durable, these tools are designed to go the distance even on the toughest of jobs.



GNSS

Topcon has a reputation around the world for its range of high precision, reliable GNSS solutions. From the new HiPer HR that tracks all signals, all satellites and all constellations to the versatile and compact HiPer SR, we offer both integrated and modular GNSS solutions to suit all applications.



Total Stations

From the ultimate in fast, accurate measuring in Topcon's new GT Series robotic, to manual total stations with exceptional reflectorless technology, Topcon has an instrument for every task. Now smaller, lighter and faster than ever, these tools combine long range with highly accurate EDM precision.

Hybrid Positioning

Combine the power of GNSS and optical measurement technology in one with Hybrid Positioning.

Unlike other dual GNSS and robotic total station solutions, Topcon's Hybrid technology enables you to switch between your GPS and total station at the touch of a button. There is no need to power up or down, as both systems run simultaneously to make switching between the two instant and effortless. It will take your productivity and in-field efficiency to even greater heights!

Field Controllers and Survey Software

Our comprehensive range of Windows controllers and field to office survey software gives you the competitive edge in collecting, analysing and utilising your survey data.



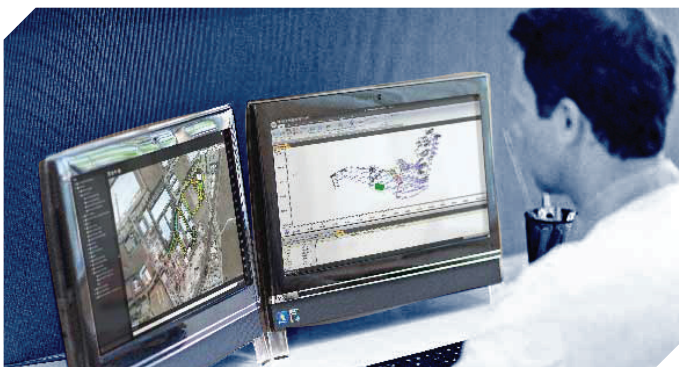
Robust Windows Tablets

Choose from the popular, industry-grade Topcon FC-5000 or Panasonic tablets for robust, user friendly field controllers that are productivity powerhouses. With their bright, crisp displays that are easy to see even in direct sunlight, high glare or rain.



Windows Mobile Controllers

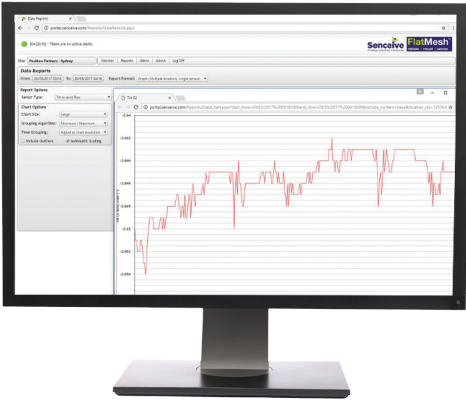
From the compact Topcon FC-500 to the Allegro 2 with full keypad, we offer a range of handheld mobile controllers to suit your keypad preference and choice of software out in the field.



MAGNET - Field and Office, Connected

Discover the power of MAGNET, which provides a seamless field to office workflow solution and the ability to connect project teams via the cloud. MAGNET Field is an intuitive field platform for use on your tablet, data collector or total station, MAGNET Office delivers powerful processing and CAD functionality. Add MAGNET Enterprise for web-based asset tracking and communication for your team.

Monitoring solutions



Manage risk with accurate deformation monitoring that incorporates best in class features and ultimate reliability. Position Partners offers comprehensive solutions including hardware and software, ensuring fast deployment and maximising productivity improvements.

Topcon Delta

With Topcon Delta, users have a complete workflow solution for all their monitoring needs, including hardware, software and automated alerts. Mitigate risk on your site with this industry-leading platform.

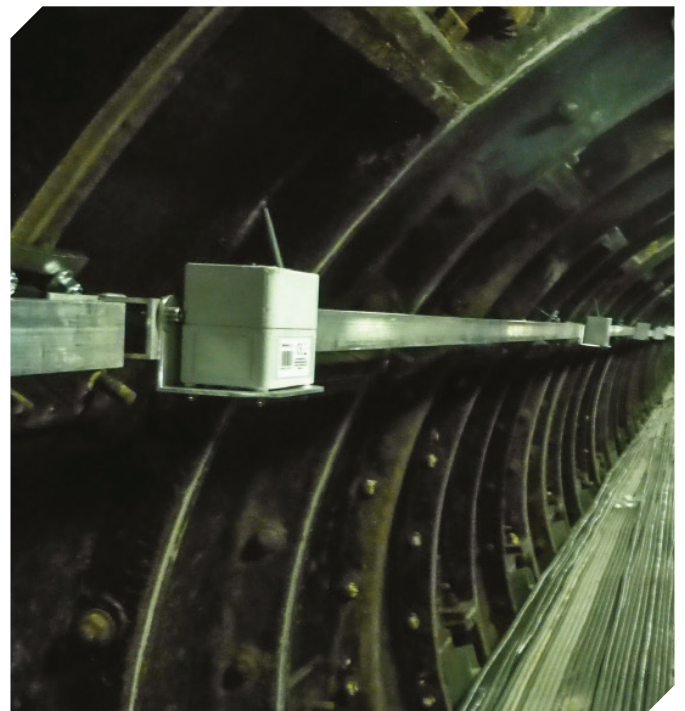
Benefits include:

- Precision measurements via the recording and processing of motorised robotic total station and environmental sensor data
- Integrated communications for remote connectivity
- Network adjustment and analysis with automated quality control including elimination of outliers
- Scalable and reliable hardware that's durable to withstand Australia's harsh climate
- Sophisticated reporting, visualisation and alarm functionality

Senceive World-First FlatMesh technology

FlatMesh technology represents a step change in wireless condition monitoring solutions, with devices that work co-operatively and intelligently across the site.

- Very high precision and stability
- Unique ability to provide automatic triggering of increased reporting rates down to 15 secs.
- Data is available to display or download on easy to use web based remote visualisation.
- Better trend analysis
- Multi-level text and email alerts.
- Fast and easy to deploy
- 10 year sensor battery life
- No mains power requirement



Remotely Piloted Aircraft Systems (RPAS)

If you need a safe, reliable RPAS that will deliver survey-grade results, look to our range of fixed wing or multi-rotor solutions. These advanced platforms offer unrivalled in-flight stability to give you crisp, clear data in every aerial mapping application.



Quantum Systems Trinity – VTOL

The Trinity combines high efficiency, flexible mission capabilities, with a small, portable footprint. It is the world's most compact VTOL fixed-wing. Push of a button is enough and the Trinity will do its assigned job. The remote controller has a clean layout without confusing switches and levers. The Trinity and the remote controller work together seamlessly to get your job done automatically, while still providing emergency override capabilities.



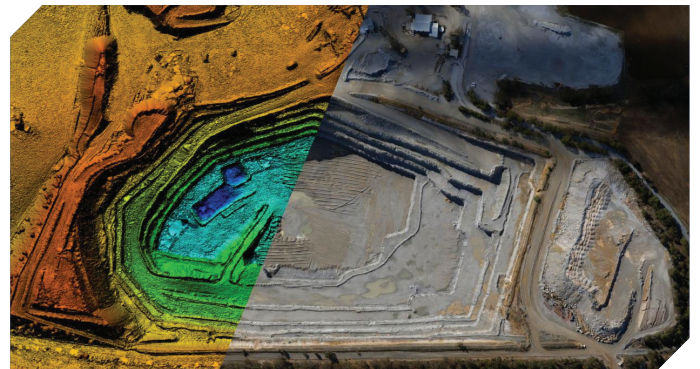
Klau PPK solutions

The Klau Geomatics PPK System is a synergy of hardware, software and methodology to seamlessly integrate into your existing UAV or manned aerial mapping and inspection operations, adding an unprecedented level of accuracy, reliability and efficiency.



P4RTK

Upgrade your next mapping mission with the Phantom 4 RTK - DJI's most compact and accurate low altitude mapping solution! Capture the best image data with a 1-inch, 20 megapixel GMOS sensor. Mechanical shutter makes mapping missions or regular data capture seamless as the Phantom 4 RTK can move. While taking pictures without the risk of rolling shutter blur. The Phantom 4 RTK can achieve a Ground Sample Distance (GSD) of 2.74 cm at 100 meters flight altitude.



Agisoft Metashape

Agisoft Metashape is a stand-alone software product that performs photogrammetric processing of digital images and generates 3D spatial data to be used in GIS applications, cultural heritage documentation, and visual effects production as well as for indirect measurements of objects of various scales.

3D Laser Scanning

Our range of terrestrial 3D laser scanners are best in class for indoor and outdoor applications, including long range capability as required. Our suppliers include Topcon, Z+F and Teledyne Optech, all renowned for delivering exceptional quality whatever your project needs.

Z+F 5010X and 5016

Easy to use with intuitive Blue Workflow and versatile data processing and analysis software, Z+F scanners offer the following benefits:

- Save time and increase productivity with real-time registration in the field
- Targetless scanning for fast, efficient operation in the field
- Tablet to scanner connectivity for instant feedback on your data
- In-field adjustment tools to maximise overlap and resolve positioning or symmetry problems
- Minimise or eliminate office registration work altogether!



Polaris TLS Series

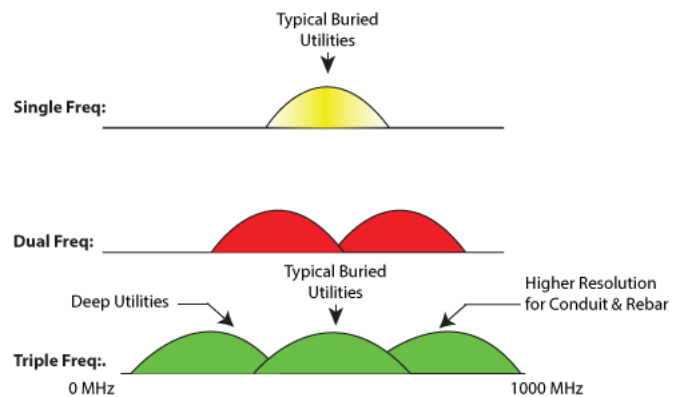
These high performance, long range scanning instruments can work to distances of up to 1.6 kilometres capturing data with exceptional clarity at high speed.

- Field efficient with automatic target-free registration
- Built-in data storage and internal camera
- Multiple lidar returns
- Durable and rugged with weather-proof housing
- Includes tilt compensation, GPS receiver and compass for increased accuracy



Sub Surface Location

Our comprehensive range of underground utility locators and ground penetrating radar (GPR) enable safer construction and excavation, with accurate mapping of underground and structural assets.



Ground Penetrating Radar

Ground Penetrating Radar can be used for locating underground utilities and structural investigations. With powerful post-processing on the go and the unique ability to amplify signal without adding noise, the US Radar range of GPR is extremely powerful and easy to use.



C Scope

C Scope Cable Avoidance Tools set a new benchmark in excavating safety, with multiple scanning modes and precise depth measurement up to 3 metres.

C Scope's class leading transmitters use One Watt adjustable power output to apply a detectable signal onto deeper and harder to detect pipes and cables for complex locate tasks.

Services



AllDayRTK – Enabling Geo-Precision

AllDayRTK is a Continuously Operating Reference Station (CORS) network that delivers accurate, reliable RTK GNSS positioning. Eliminating the need to setup and maintain a temporary base station, AllDayRTK is a subscription service that gives you increased flexibility and ultimate reliability.



Support for your growing business

At Position Partners, we understand that time is critical to your success. Rest assured that we will make every effort to ensure your systems are performing in optimum condition and that your team is equipped with the technical training and product knowledge they need to get the most from their equipment.

Our comprehensive Support and Maintenance agreements ensure your equipment and employees are backed by our team of manufacturer trained technicians and experienced staff. With unique benefits such as a guaranteed buy-back or trade-in on your hardware after three years, extended warranty and complimentary accessories replacements, maintenance agreements protect your investment and keep you productive.

To support your employees, Position Partners offers company-wide support for your business to ensure everyone is getting the most from your systems. Tokara Link enables Position Partners' technicians to connect directly to your surveyhardware to provide fast, hassle-free remote support and remote firmware updates. Tokara Link gives you help on hand when you need it.



Workshop Services

Comprehensive product service, maintenance, repairs and advice are provided via our local service centres. We guarantee all our work and can supply calibration certificates to meet QA requirements.



Training

Initial “getting started” training is provided on all systems. Subsequently, a comprehensive range of Campus courses are tailored for beginners to advanced users, either at our offices or on site



Hire or lease options

The full range of systems, from construction lasers, to GPR and industry-leading RPAS platforms, can be hired or leased to suit any application and provide financial flexibility.



Shop Online!

Buy a wide range of accessories and products with delivery to your door or free pick-up from your local branch.

www.shop.positionpartners.com.au



Get in touch today:

1300 867 266

info@positionpartners.com.au

www.positionpartners.com.au

Australia • New Zealand • SE Asia



Shaping New Dimensions