

Robotic Total Station

GT-1200/GT-600



Superior performance and precision for
all survey and construction applications

The Ultimate Total Station

GT-1200/GT-600

With the GT-1200/GT-600, you get the efficiency of a single-operator robotic system, the power of long-range reflectorless measurements, and the versatility of Hybrid Positioning™, all in your choice of 1", 2" or 3" GT-1200 models or 2", 3" or 5" GT-600 models.

Ultra powerful

Improved, intelligent Ultrasonic motor control provides smoother operation with less wear and tear. Ideal for survey, vertical construction or machine guidance, the solution is designed to stake or layout more points in less time even in challenging conditions.

Ultra accurate

Improved, UltraTrac™ prism tracking for challenging job site environments utilizes optical sensing combined with high-speed Ultrasonic motor control. Whether working at a distance or up close, the instrument maintains prism lock making you more productive in any environment.

Ultra productive

Combine and conquer by accelerating your productivity with our hybrid solutions that utilize both GNSS and robotics so you can capture the shot, regardless of tree cover, loss of line of sight, or hard to reach points. Get to the next level of performance to tackle any project in a fraction of the time.

**10 Hz update rates for faster
more efficient staking**

**180°/sec turning speed for
exceptional productivity**

**30% smaller and lighter than
any other Topcon series robotic
instrument**

**Stay productive, stay confident
with UltraTrac™ prism lock
technology**

**GNSS hybrid ready so you can
handle any job site**





- 1 Fast and powerful EDM - 1,000 m non-prism and 5,000 m prism range
- 2 Rugged waterproof and dustproof IP65 design
- 3 Bright color touchscreen display for on-board data collection
- 4 Integrated Bluetooth® and advanced LongLink™ communication for up to 1,968 feet fully robotic range
- 5 Direct Drive motors with a turning speed of 180° per-second
- 6 Advanced UltraTrac technology
- 7 Raised multi-key functionality
- 8 Add the RC-5A remote for over 900 foot “single tap” prism re-acquisition

Your return on investment

An MEP contractor saved over \$200,000 in labor laying out over 128,000 points for sleeves and inserts over the span of a multiple building project with 109 floors. HPS Mechanical Case Study

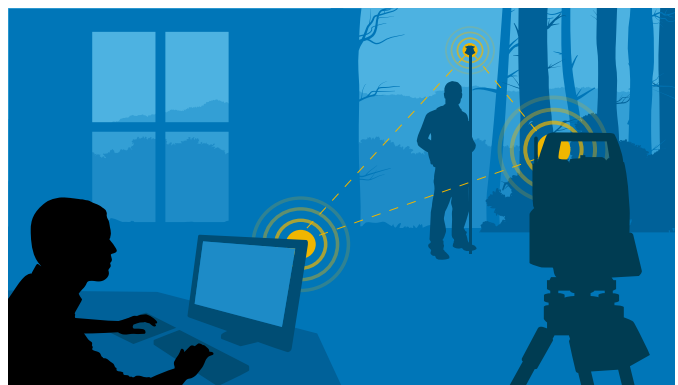
“ The bottom line is that a team equipped with a robotic total station can be five times as fast as team armed only with a set of drawings and a measuring tape. ”

MCAA study

Workdays turned into workflows

Bridge the gap between your mobile workforce and office staff with faster, more efficient cloud-based MAGNET® Enterprise services.

- Secure connectivity to all of your active job sites as well as heavy machines using Sitelink3D™
- Remove data silos and promote easy collaboration between office staff and managers
- Instant file sharing with both Autodesk® AutoCAD Civil 3D and Bentley MicroStation



ACCELERATE

PRODUCTIVITY



GT-1200

+



FC-6000 with
MAGNET Field

+



HiPer VR

+



MAGNET
Office



GT-1200/GT-600 Robotic Total Station

- 10 Hz update rates to the FC-6000 field computer for more efficient staking
- Ultrasonic Direct Drive motors with 180° turning speed for exceptional productivity
- 30% smaller and lighter than any other Topcon series robotic instrument
- Optimize productivity by combining the GT-1200/GT-600, FC-6000, and MAGNET software with a HiPer series receiver



FC-6000 Field Computer

- Increased processing speed for data sets large and small with improved graphics
- LongLink™ Bluetooth provides two times longer range than class 1 Bluetooth
- Long lasting, hot swappable battery and an internal battery for additional runtime
- Optional external keyboard and docking station further enhance productivity



HiPer VR Receiver

- Automatically tracks every satellite constellation signal now and into the future
- Withstand the harshest environments with rugged IP67 design
- Compact form factor ideal for Millimeter GPS and Hybrid Positioning
- Capture mis-leveled field measurements out of plumb by as much as 15°



MAGNET Software Suite

- Streamline your most-used routines and ensure a fast and easy data connection from field to office
- Faster, customizable applications for processing, field-to-finish and 3D construction
- Integrate robotic total station and GNSS with increased speed and productivity
- Graphical intuitive software with low learning curve
- Microsoft Bing Maps® for satellite image background



Specifications subject to change without notice.
© 2020. Topcon Positioning Systems, Inc.
All rights reserved. 7010-2319 A 10/20

www.topconpositioning.com/gt1200-600series

Get in touch today:

+65 6261 1160 Singapore +62 21 2985 7387 Jakarta +63 917 3186616 Manila

info@positionpartners.asia
www.positionpartners.asia



Shaping New Dimensions