

View Menu Options

3D-MC can display several types of views, each of which contain useful information:

- Display plan, section, profile or 3D views in the main screen.
- Display the grade indicator at the left or right of the screen.
- Set the steering light bar at the top or bottom of the screen.
- Select **Display options** for various data, depending on the files selected for display.
- Select the language for your country.
- Change how the machine appears in the main screen.
- View 3D-MC information from the **About** screen.

Figure 5-1 shows the options available.

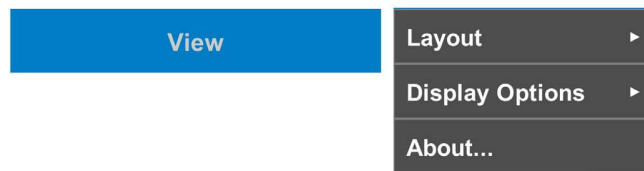


Figure 5-1: View Menu Options

Layout Menu Options

1. Select **Main Menu > View > Layout** and select either the **New**, **Edit**, **Reset** or **Delete** buttons.
 - Selecting the **New** button will display the current **Screen Configuration** setup. This will add a new layout to the layout set.
 - Selecting the **Edit** button will display the current **Screen Configuration** setup. This will allow the user to change the current layer.
 - Selecting the **Reset** button will allow the user to reset the system to the initial default layout set by the user.
 - Selecting the **Delete** button will delete the currently displayed layout.



NOTE

When there is only one layout remaining, the **Delete** menu is grayed out.

Main Screen Layout

The main screen can display the following views:

- **Plan** – top down view of the machine, project file, layers and so forth.
- **Profile** – side view of the machine in relation to the surface.
- **Section** – head on view of the blade in relation to surface.

Figure 5-2 shows the different views of the machine.

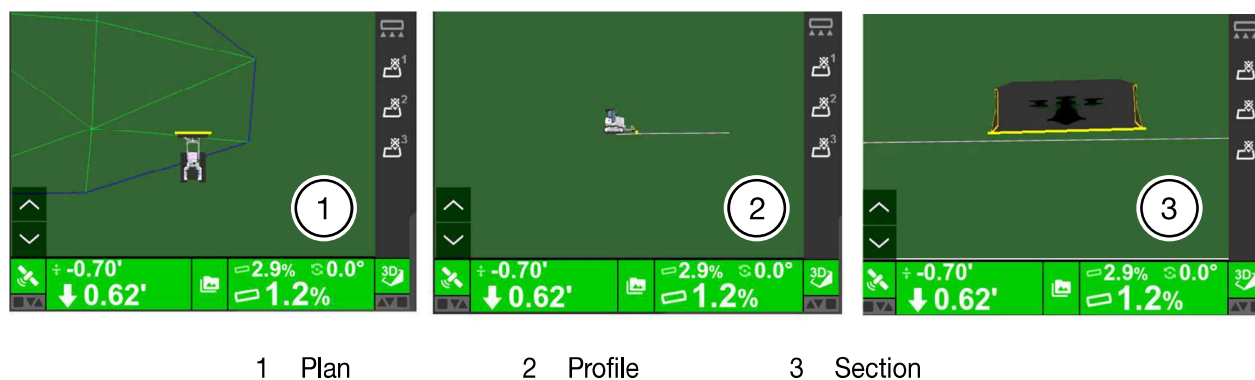


Figure 5-2: View Types

Change Main Screen Layout

The main screen can be set to different configurations. Figure shows the screen configuration options available.



Figure 5-3: Change Screen Layout

1. Select **View** (1, Figure 5-3).

2. Select **Layout** (2, Figure 5-3 on page 5-2).
3. Select either **New** or **Edit** (3, Figure 5-3 on page 5-2).
4. Select the desired layout (4, Figure 5-4).

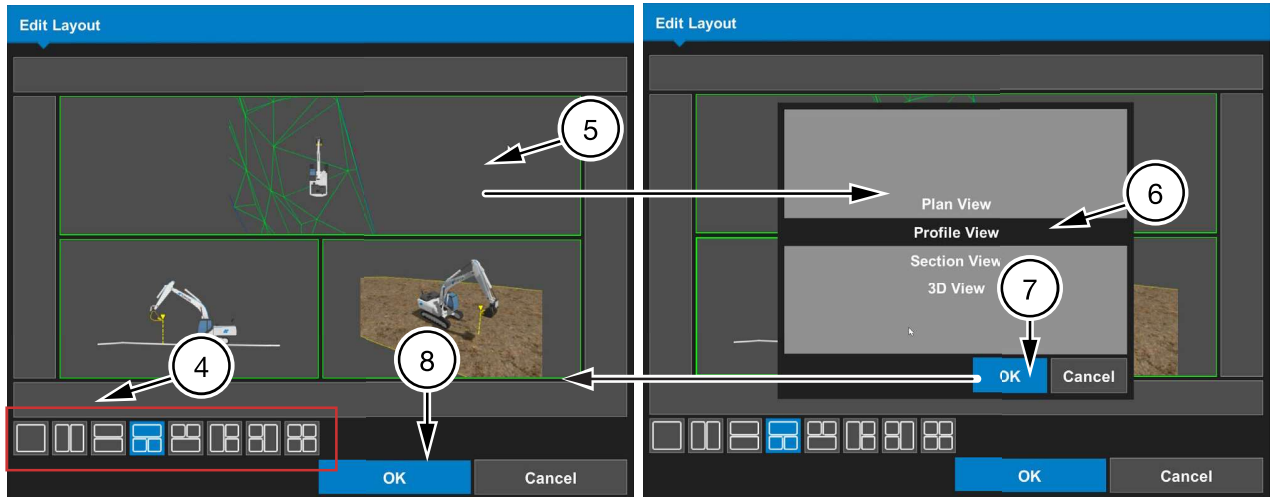


Figure 5-4: Set the Main Screen Layout

5. Select a panel to select the view (5, Figure 5-4). The **Select a View** screen appears.
6. Select the desired view for the panel (6, Figure 5-4).
7. Select **OK** (7, Figure 5-4).
8. Select **OK** (8, Figure 5-4). The main screen is displayed with the selected layout and views.