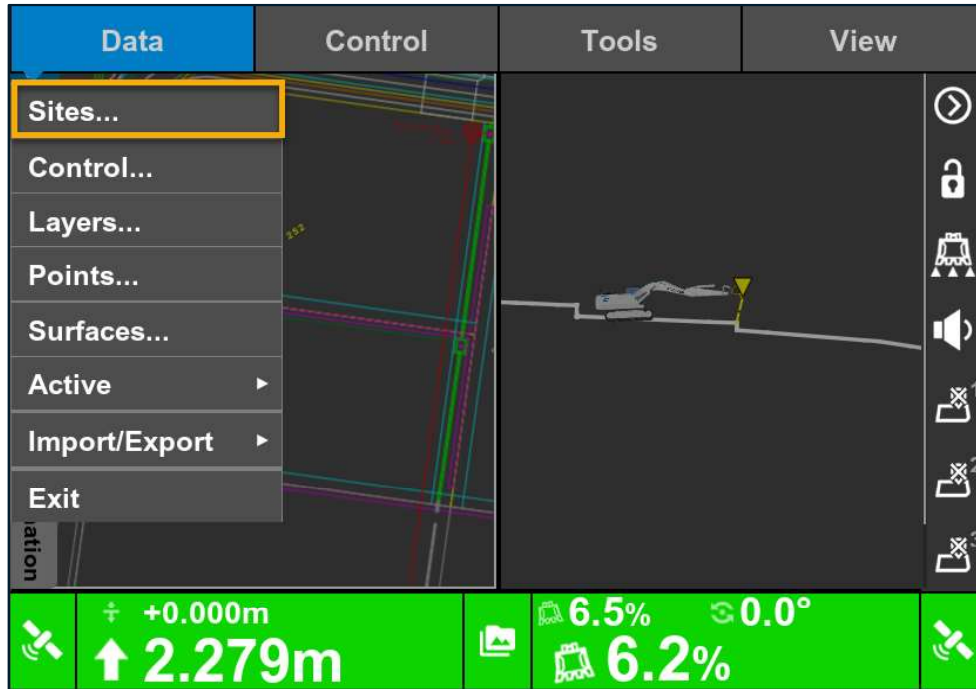


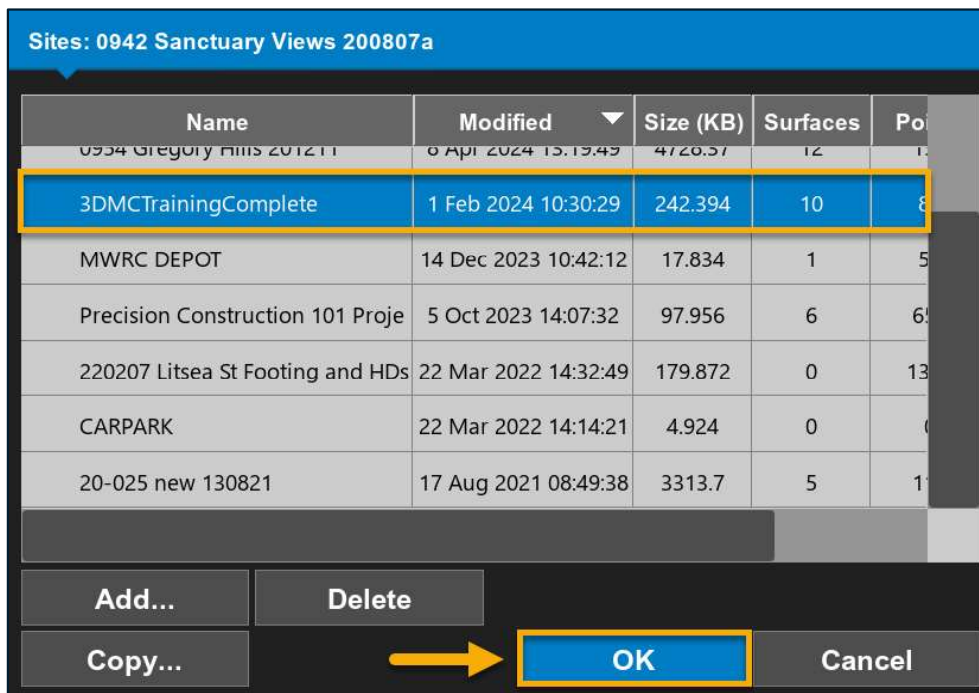
Loading & Selecting a Site

Selecting a Site

Press the Power/Menu Button (GX-55/GX-75) to open the main menu, then select **Data > Sites**.

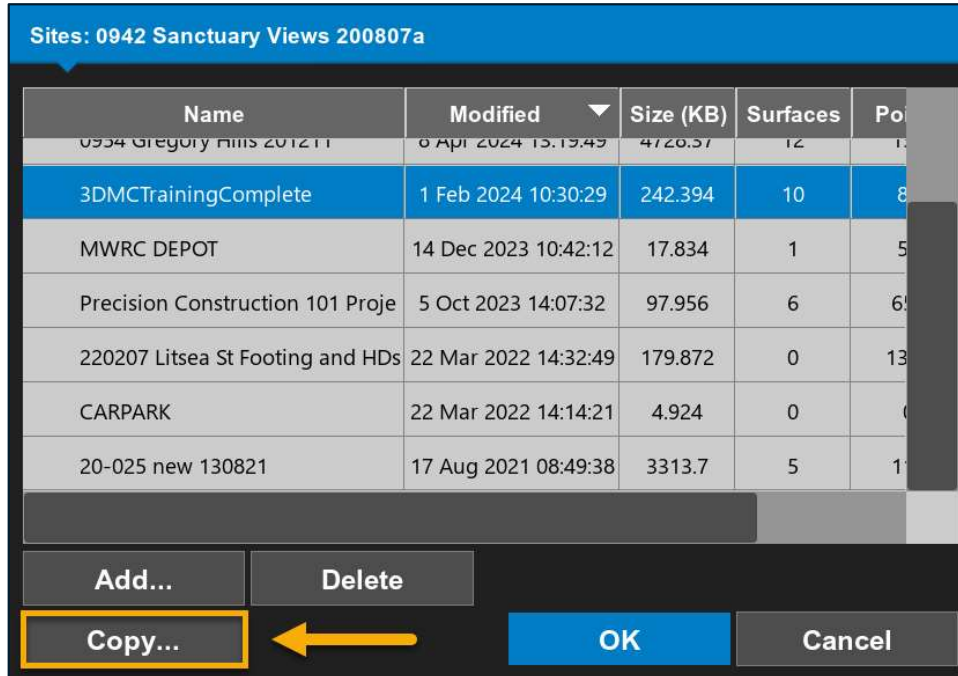


This will open a list view of all the sites on the control box, tap on the required site and press **OK**. The project will load on the screen.

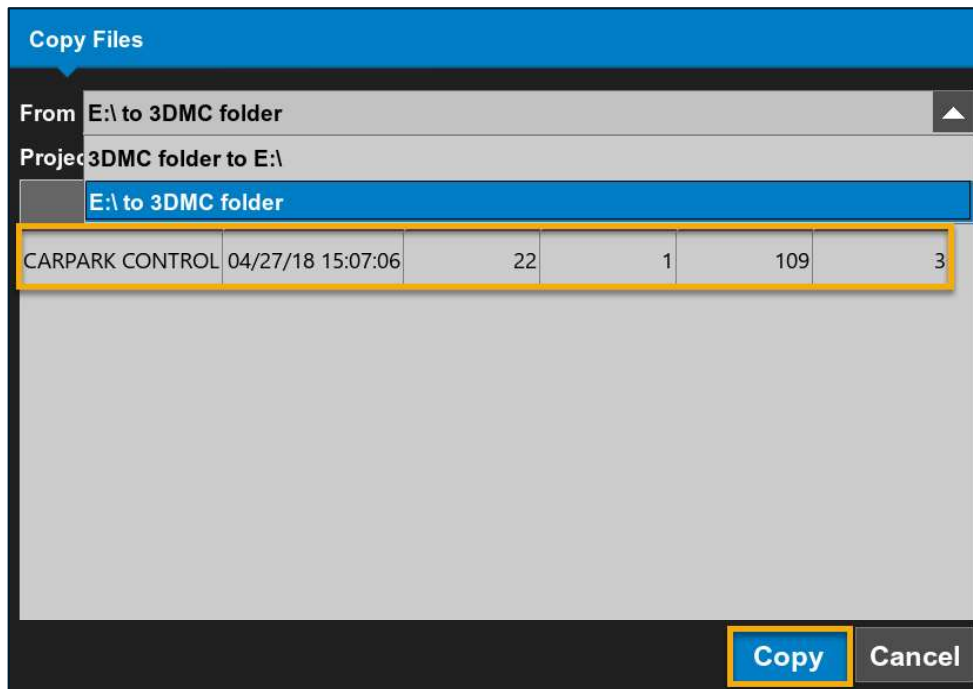


Copying a Site

To copy a site from a USB storage device, insert the USB into the USB port. Go to **Data > Sites** and select **Copy**.



Select the pull-down option **From:** and set to **D:/ to 3DMC folder**. This will show a list of project files that are in the root directory of the USB (i.e. not hidden in a folder). Tap on the required site and press **Copy**.



The file will be then listed in the Site Files list to be made active in the software.

