

## Active

### Select an Active Surface

1. Press the **Power** button on the display, then select **Data > Active > Surface**. Select the surface file you want to be active on the main screen (Figure 2-51).

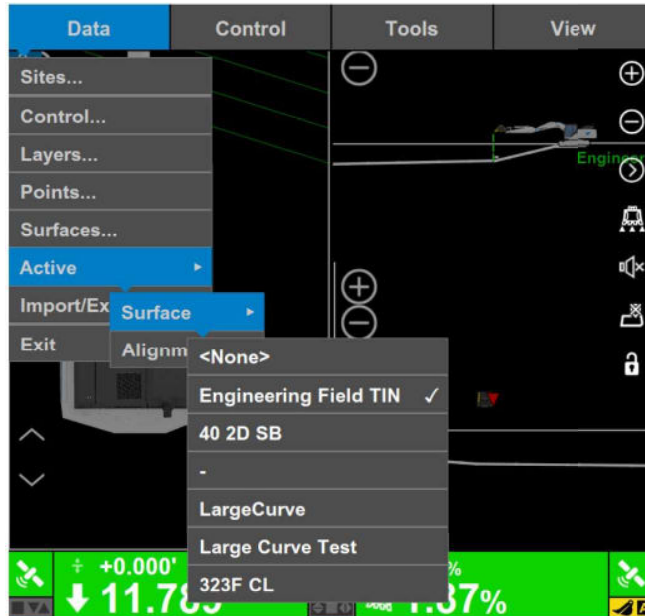


Figure 2-51: Select an Active Surface File



#### NOTICE

Surfaces can also be selected as active using the Context Pop-up menu. For more information, see “Set Active Surface” on page 6-16.

### Select an Active Alignment

1. Press the **Power** button on the display, then tap **Data > Active > Alignment**.
2. Select the alignment file to be active on the main screen (Figure 2-52).

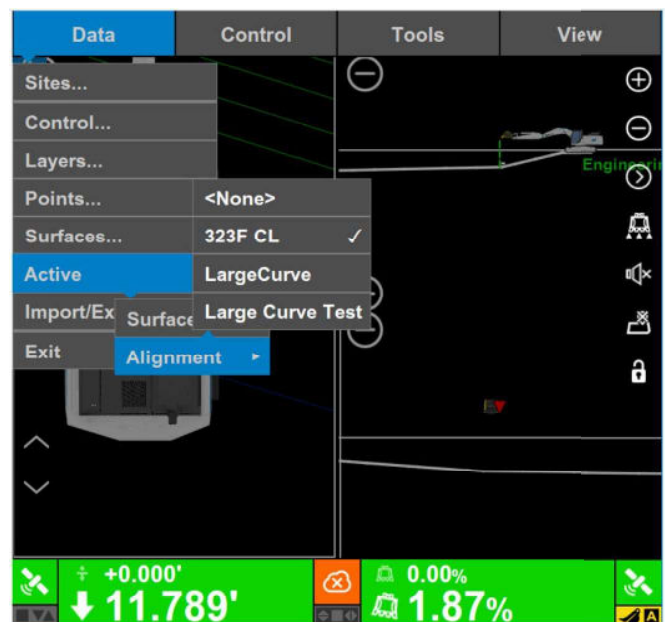


Figure 2-52: Select an Active Alignment File



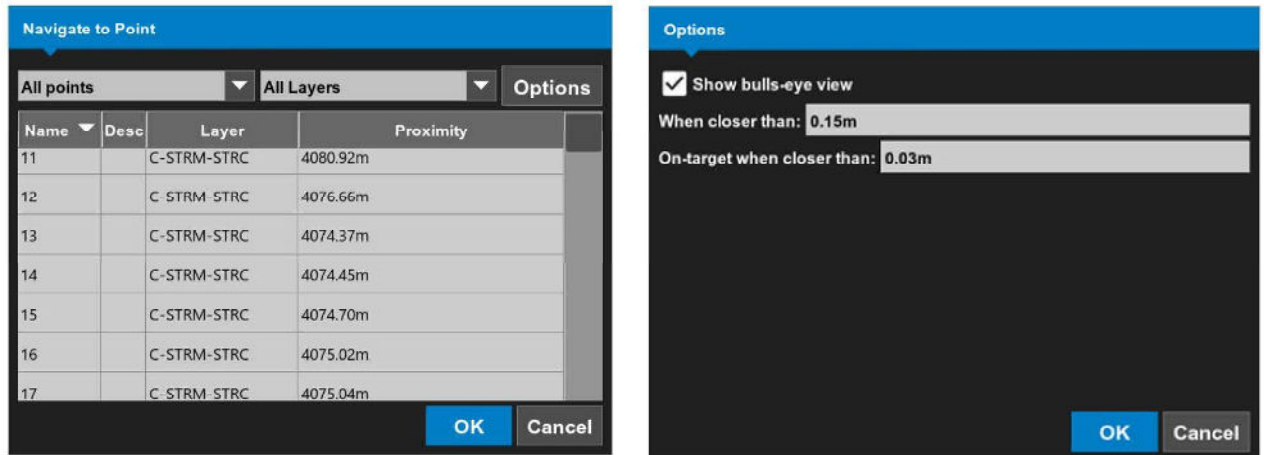


Figure 4-8: Navigate to a Point—Options Tab

5. Select the **Show bulls-eye view** check box.
6. Configure the bulls-eye view settings (Figure 4-9).
  - a. **When closer than:** enter a designated value when the bulls-eye view populates.
  - b. **On-target when closer than:** enter a designated value when the bulls-eye is on target.

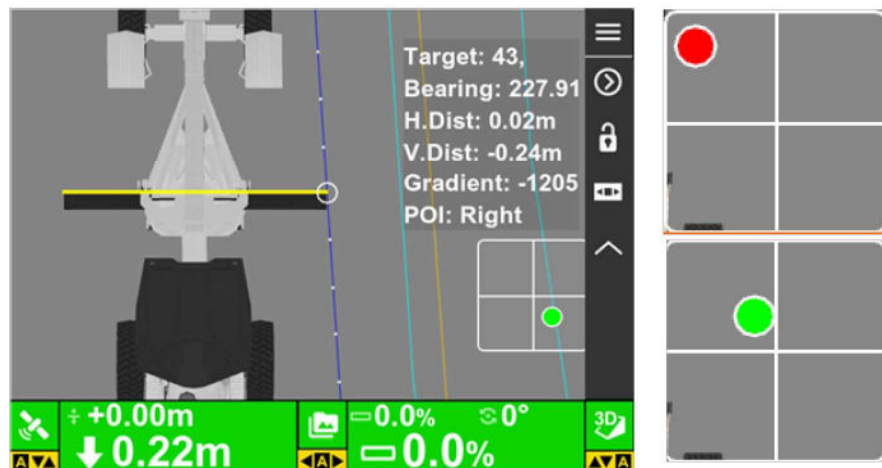


Figure 4-9: Machine Navigates to Selected Point

7. To stop the navigation, press the Power button on the display, then select **Tools > Stop Navigation**. The stakeout information disappears from the main screen.



**NOTE**

When Show bulls-eye view is selected in the **Options** menu of the **Navigate to View** screen, the navigation bulls-eye appears on the main screen when the machine enters the predefined bulls-eye area. The bulls-eye will be displayed as green if the point is on or close to the target.