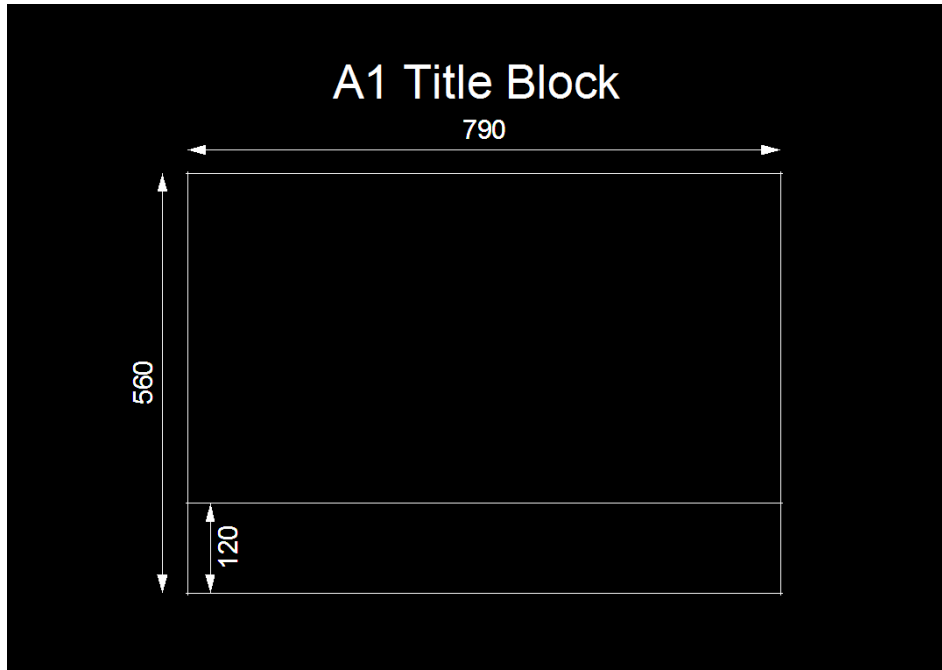


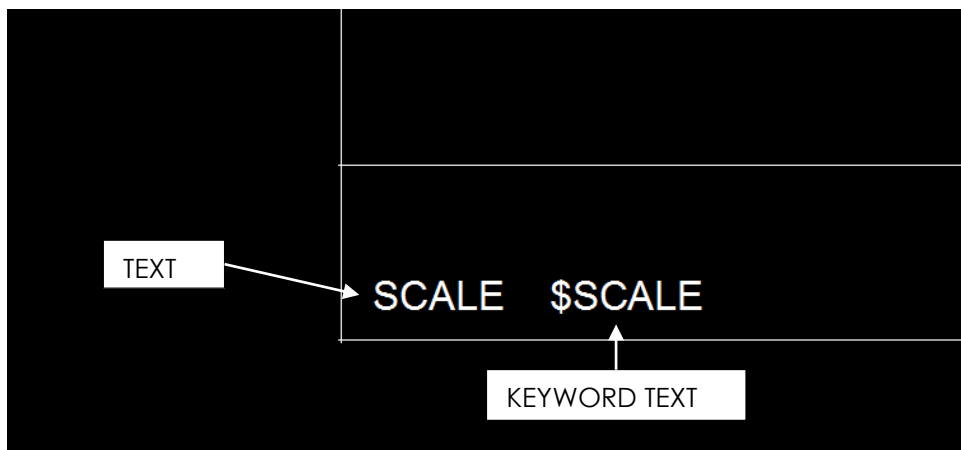
Title Block Creation

We will create an A1 title block with dimensions 790mm by 560mm with a title strip 120mm along the bottom edge of the title block.

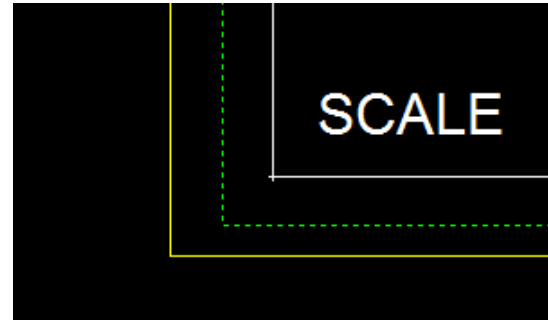
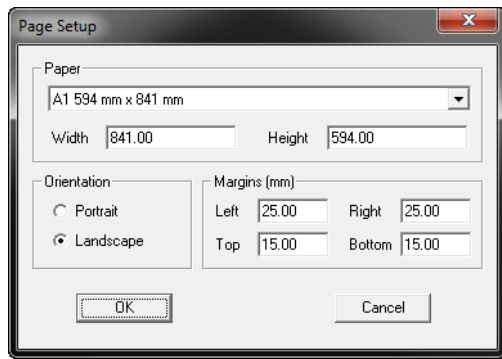
1. Start a new job in the Survey Module, draw a title block with the following dimensions:



2. First select the option **INSERT** → **TEXT** and left click in the title area to position the text. Type **SCALE**. The actual scale of the plot window will follow this when you position the relevant keyword next.



3. Now select **INSERT** → **TEXT** → **KEYWORD** and select a position just to the right of the word **SCALE**. When the title block is used for plotting the correct scale will appear at this location.
4. Select the option **LIBRARY** → **TITLE BLOCK** and fill out as shown here, once the page setup is complete place the margin corner to the corner of the border.



5. The first prompt, after pressing "OK", will ask for the origin point to define a window around the border of your title block. The second two prompts allow you to define the drawing area available for plotting. This should exclude the title strip.